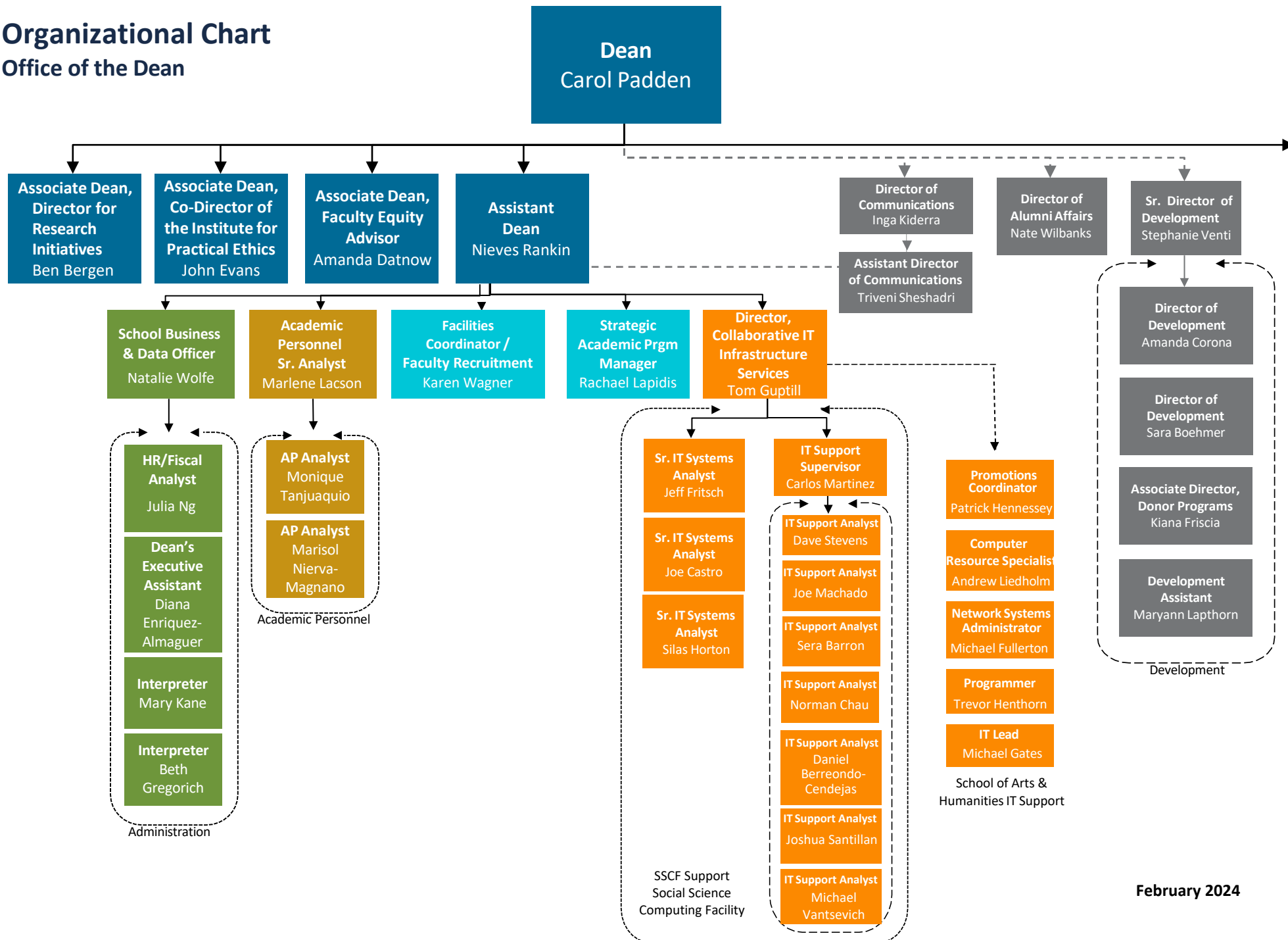


Organizational Chart Office of the Dean



- Academic Departments**
 - Anthropology
 - Cognitive Science
 - Communication
 - Economics
 - Education Studies
 - Ethnic Studies
 - Linguistics
 - Political Science
 - Psychology
 - Sociology
 - Urban Studies & Planning
- Interdisciplinary Programs**
 - Computational Social Science
 - Critical Gender Studies
 - Global Health
 - Human Developmental Sciences
 - Latin American Studies
- Other Interdisciplinary Programs and Studies**
 - African Studies
 - Center for Global California Studies
 - Cognitive Science Program
 - Contemporary Issues
 - Health Care and Social Issues
 - Human Rights and Migration
 - Language and Communicative Disorders Program
 - Law and Society
 - Science Studies
 - Science, Technology and Public Affairs
- Research Centers**
 - African and African-American Research Center
 - American Politics and Institutions Project
 - Black Studies Project
 - Center for African Political Economy
 - Center for Comparative Immigration Studies
 - Center for Environmental Economics
 - Center on Global Justice
 - Center for Human Development
 - Center for Iberian & Latin American Studies
 - CREATE
 - Center for Research in Language
 - Center for the Study of Gender in the Professions
 - Center for Urban Economics
 - Center for US-Mexican Studies
 - Institute for Applied Economics
 - Institute for International, Comparative, and Area Studies
 - Institute for Neural Computation (with JSOE)
 - Kavli Institute for Brain and Mind (with Biology)
 - Laboratory of Comparative Human Cognition
 - Project in Cognitive and Neural Development
 - San Diego Education Research Alliance
 - U.S. Immigration Policy Center
 - The Yankelovich Center for Social Science Research